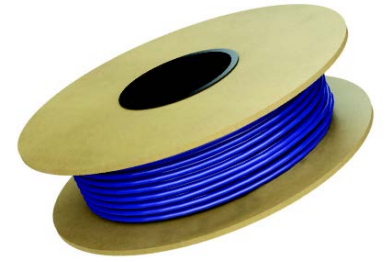


PRODUCT CODE

DCM-C-xxx-xxx // DCM-C-voltage-wattage

PRODUCT DESCRIPTION

The Warmup DCM-PRO Cable is a custom designed cable compatible with all uncoupling membranes. It can be installed at 3 or 4 pegs to achieve the desired heat output. The cable itself allows primary heating thanks to the twin-core ETFE cable, for highest output. It is guaranteed 30-years. Even better results when used with Warmup Smart Thermostats.

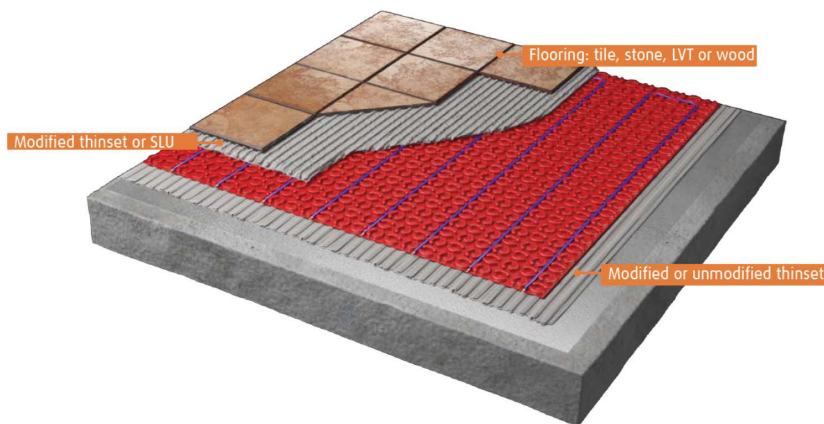


SPECIFICATIONS

Operating voltage	120V, 208V or 240V
Thickness	3/16" (4.5mm - +/- 0.2mm)
Output	Approx. 4W/lin foot
Construction	Multi-stranded, dual wire
Inner insulation	ETFE
Outer jacket	PVC
Earth braid	85% min copper
Cold lead	10ft (3m) long, 2 core braided
Approvals	cULus



APPLICATION



PRODUCT LISTING AND CABLE SPACING

	PRODUCT CODE	Cable length (ft)	Amps	Resistance (Ω)	Membrane spacing				Loose laid cable w/ spacers	
					2-3 pegs	3 pegs	3-4 pegs	4 pegs	3"	4"
120 Volt	DCM-C-120-65	16.7	0.5	221.5	4	5	6	7	4	6
	DCM-C-120-130	33.1	1.1	110.8	8	10	12	13	8	11
	DCM-C-120-195	49.9	1.6	73.8	13	15	18	20	12	17
	DCM-C-120-260	66.3	2.2	55.4	17	20	23	27	17	22
	DCM-C-120-325	83.0	2.7	44.3	21	25	29	33	21	28
	DCM-C-120-390	99.4	3.3	36.9	25	30	35	40	25	33
	DCM-C-120-525	132.9	4.4	27.4	33	40	47	53	33	44
	DCM-C-120-655	166.0	5.5	22.0	42	50	58	67	42	55
	DCM-C-120-785	199.1	6.5	18.3	50	60	70	80	50	66
	DCM-C-120-920	232.3	7.7	15.6	58	70	82	93	58	77
	DCM-C-120-1050	265.4	8.8	13.7	67	80	93	107	66	88
	DCM-C-120-1180	298.6	9.8	12.2	75	90	105	120	75	100
	DCM-C-120-1315	331.7	11.0	11.0	83	100	117	133	83	111
	DCM-C-120-1445	364.8	12.0	10.0	91	110	128	147	91	122
	DCM-C-120-1575	398.0	13.1	9.1	100	120	140	160	99	133
240 Volt	DCM-C-240-195	50.0	0.8	296.0	13	15	18	20	12	17
	DCM-C-240-325	83.0	1.4	177.2	21	25	29	33	21	38
	DCM-C-240-390	99.4	1.6	147.7	25	30	35	40	25	33
	DCM-C-240-525	132.9	2.2	109.7	33	40	47	53	33	44
	DCM-C-240-655	166.0	2.8	87.9	42	50	58	67	42	55
	DCM-C-240-785	199.1	3.3	73.4	50	60	70	80	50	66
	DCM-C-240-920	232.3	3.9	62.6	58	70	82	93	58	77
	DCM-C-240-1050	265.4	4.5	54.9	67	80	93	107	66	88
	DCM-C-240-1180	298.6	5.0	48.8	75	90	105	120	75	100
	DCM-C-240-1310	331.7	5.6	44.0	83	100	117	133	83	111
	DCM-C-240-1640	414.7	7.0	35.1	104	125	146	167	104	138
	DCM-C-240-1970	497.7	8.4	29.2	125	150	175	200	124	166
	DCM-C-240-2300	580.7	9.8	25.0	146	175	204	233	145	194
	DCM-C-240-2630	663.4	11.2	21.9	166	200	233	266	166	221
	DCM-C-240-2955	746.4	12.6	19.5	187	224	262	300	187	249
DCM-C-240-3240	829.4	13.5	17.8	208	249	292	333	207	276	

Installation Membrane

Code	Description	Dimensions
Peel & Stick		
DCM-PSW-70	Box of 10 sheets, covering 73.13 sqft in total	2'3" x 3'3" (678mm x 985mm)
DCM-PSW-150	Roll of membrane, covering 150 sqft in total	46'7" x 3'3" (14,200mm x 985mm)
Fleece		
DCM-MW-70	Box of 10 sheets, covering 73.13 sqft in total	2'3" x 3'3" (678mm x 985mm)
DCM-MW-150	Roll of membrane, covering 150 sqft in total	46'7" x 3'3" (14,200mm x 985mm)

Cable plastic fixing strips

Code	Description
PLG-DCM-12	Plastic fixing strips - 40 per box.

WARRANTY & MAINTENANCE

When installed according to the installation manual, the DCM-PRO Cable is covered with Warmup's 30-year manufacturer warranty.

TECHNICAL SUPPORT

Warmup is available 24/7/365 at (888) 927-6333.

For quotes, layouts and specific technical information, contact us at:

Warmup USA

(888) 927-6333

us@warmup.com

Warmup CANADA

(888) 592-7687

ca@warmup.com

RELATED PRODUCTS

- 6iE SMART WIFI THERMOSTAT - see WSC - 0921
- TERRA WIFI THERMOSTAT - see WSC - 1021
- DCM-PRO Fleece Membrane for DCM-PRO Cable - see WSC-0705
- DCM-PRO Peel & Stick Membrane for DCM-PRO Cable - see WSC-0706